

Symantec Endpoint Protection User Manual

To manage Symantec Endpoint Protection the icon in notification area can be double clicked.



Figure 1: Symantec Endpoint Protection notification area icon.

The management interface of Endpoint Protection software is like below (figure 2).

Under "Status" title, current status of software can be seen.

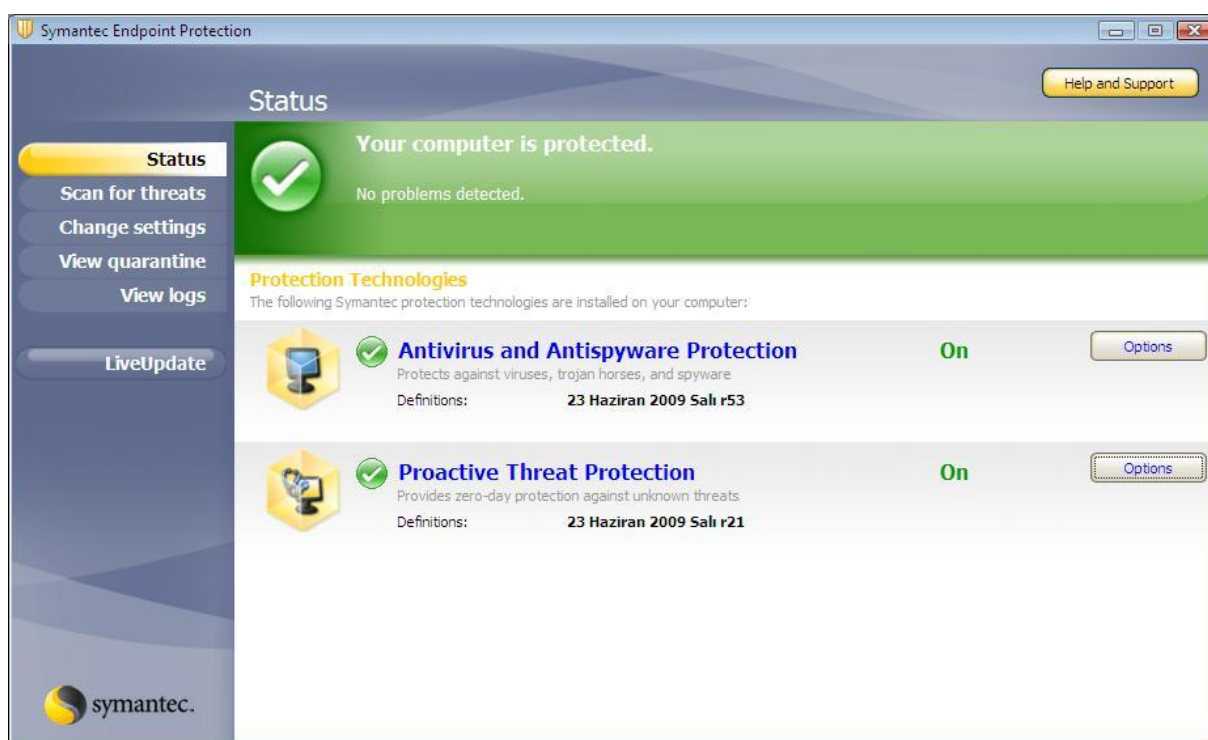


Figure 2: Management interface (Status).

On status screen 2 properties of the software can be controlled. (Antivirus and Antispyware Protection and Proactive Threat Protection). These properties have options of:

- Change settings,
- Active Scanning,
- View Logs,
- Auto protect Statistics,
- Threat list,
- Disabling Antivirus and Antispyware, (Figure 3)



Figure 3: Antivirus and Antispyware Protection Options.

For the second property there are 3 options:

- Disabling Proactive Threat Protection,
- Viewing Logs,
- Changing Settings.(Figure 4)

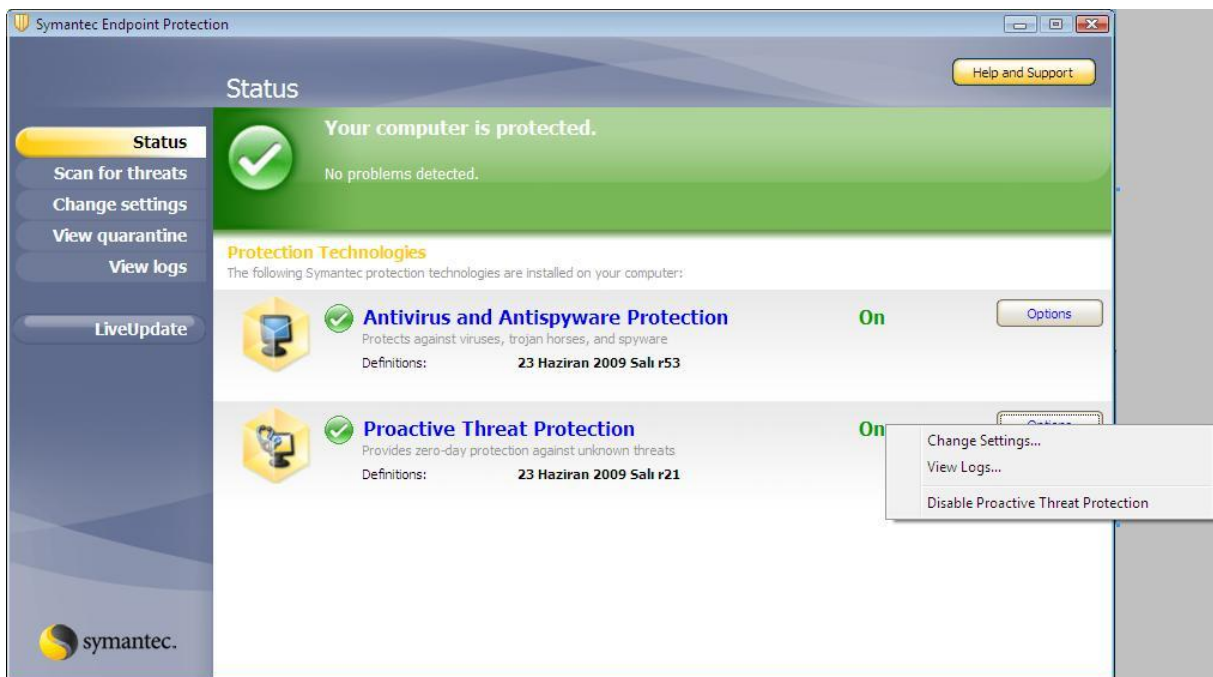


Figure 4: Proactive threat protection.

Under “Scan for threats” Title, customized scanning, defining scheduled scans, or full system scanning can be done. (Figure 5)

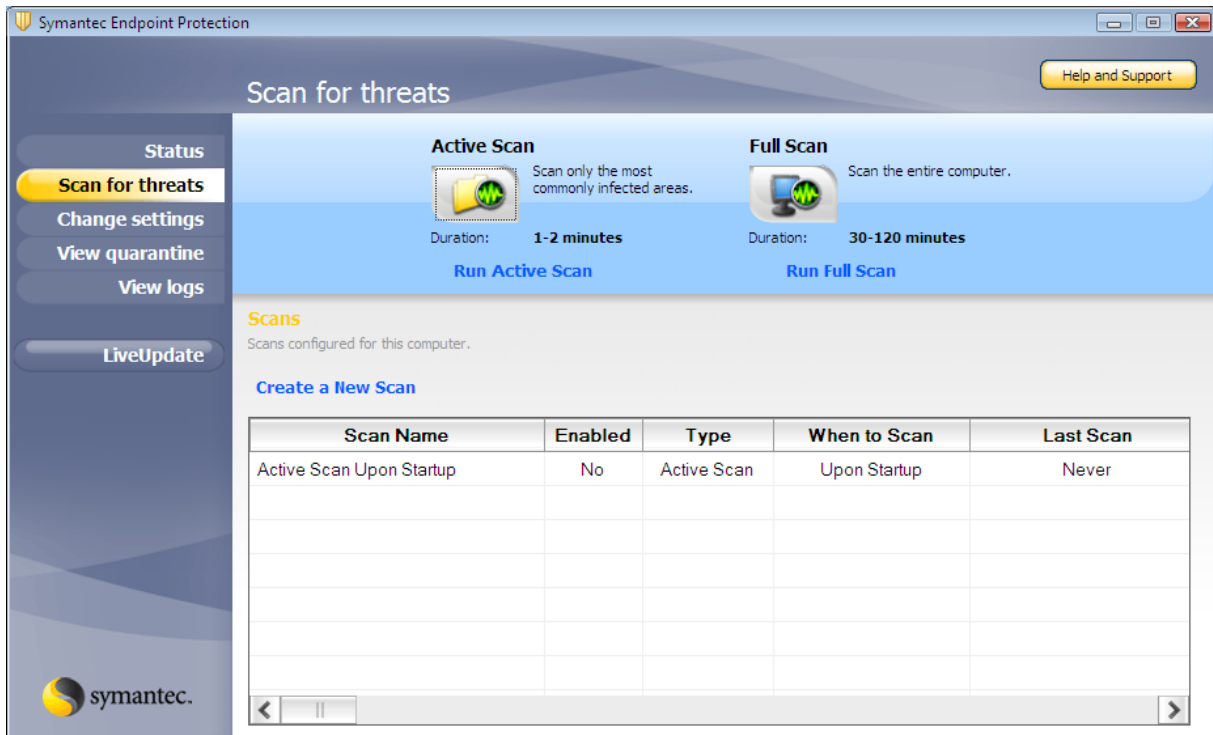


Figure 5: Management interface. (Scan for threats)

Under “Change Settings” title, software settings can be changed.

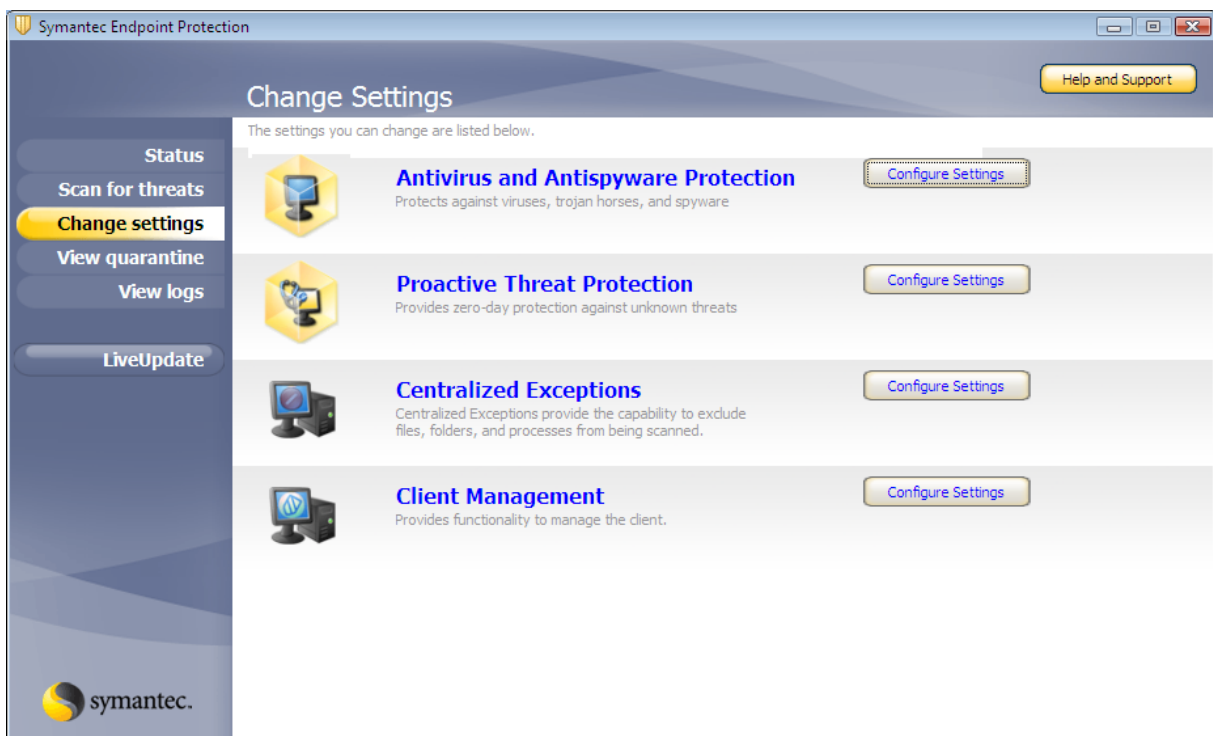


Figure 6: Management interface. (Change Settings)

“Antivirus and Antispyware Protection” settings are:

- Email settings
- File System auto-protect settings
- Log settings.

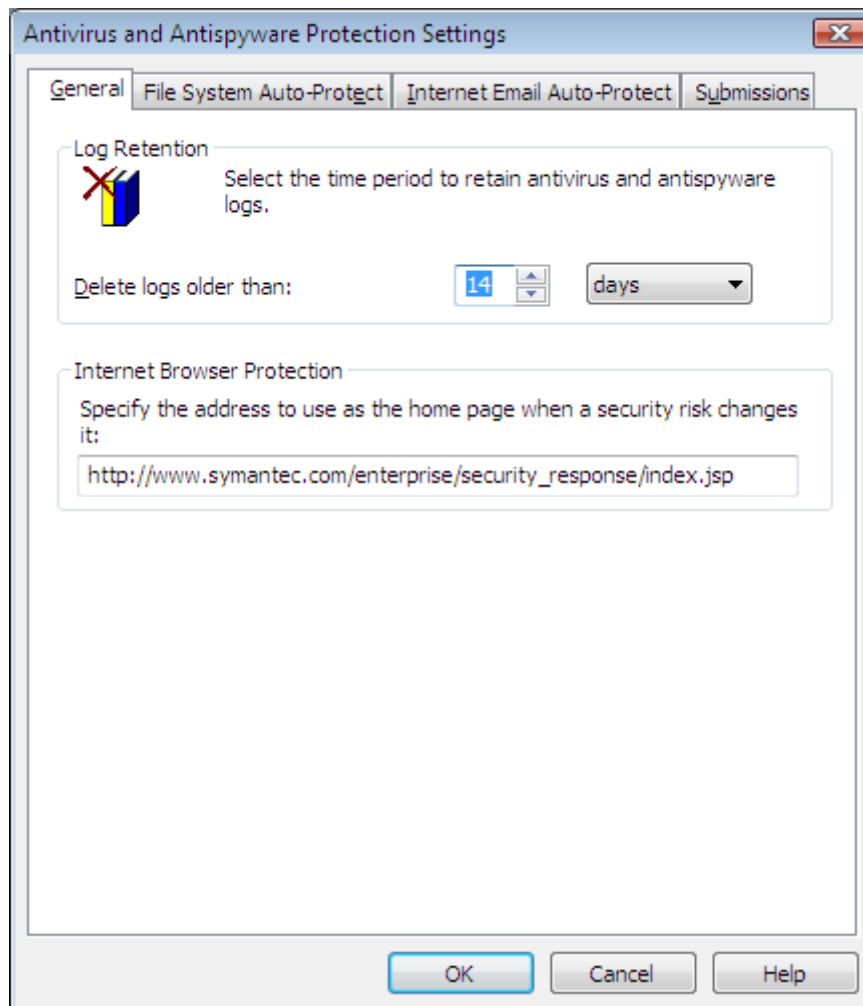


Figure 7: Antivirus and Antispyware Protection Settings

“Proactive Threat Protection” settings are:

- Enabling/disabling Scan for Trojans and worms
- Enabling/disabling Scan for keyloggers

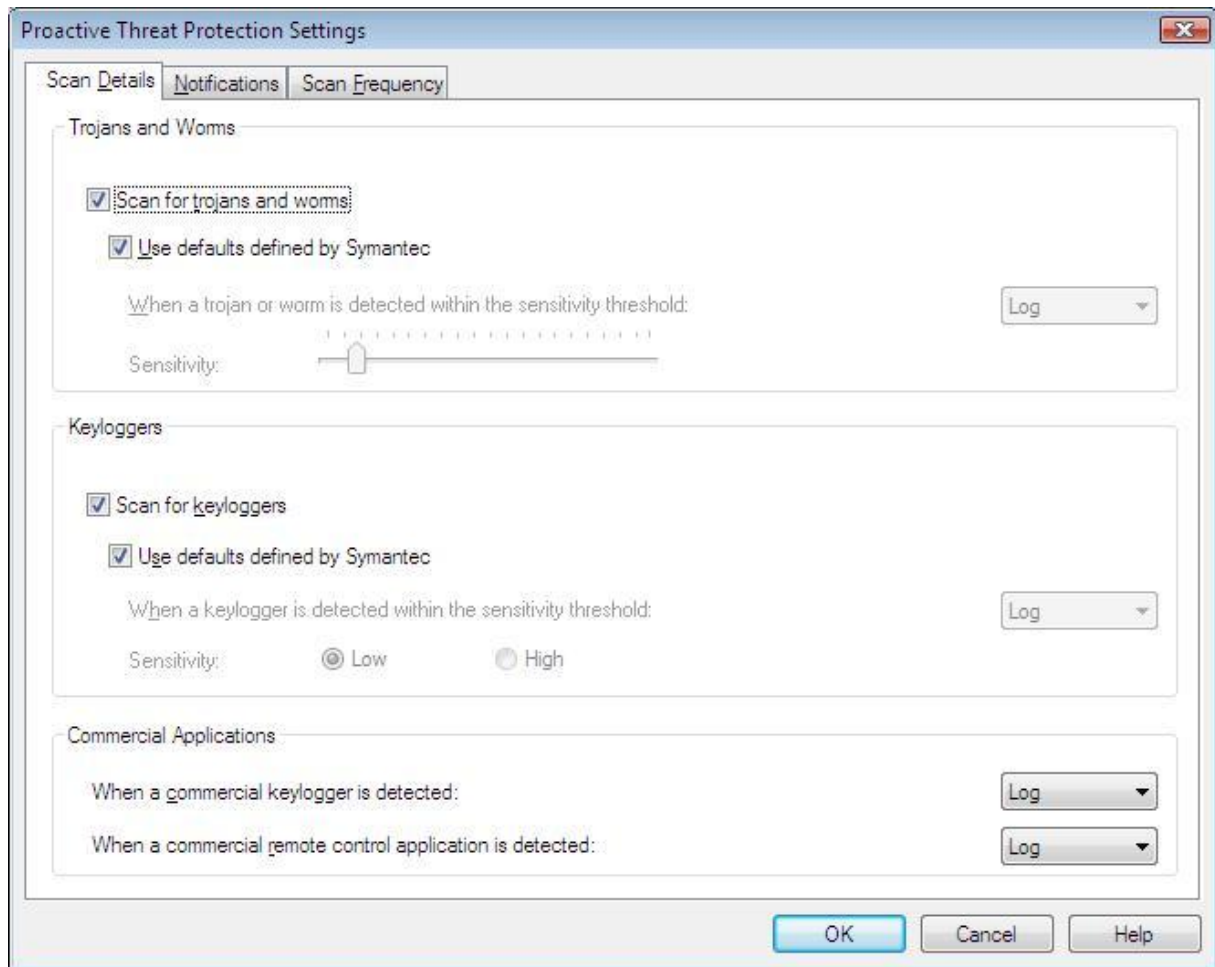


Figure 8: Proactive Threat Protection Settings.

"Client Management "settings are:

- Scheduled updates,
- Tamper protection.

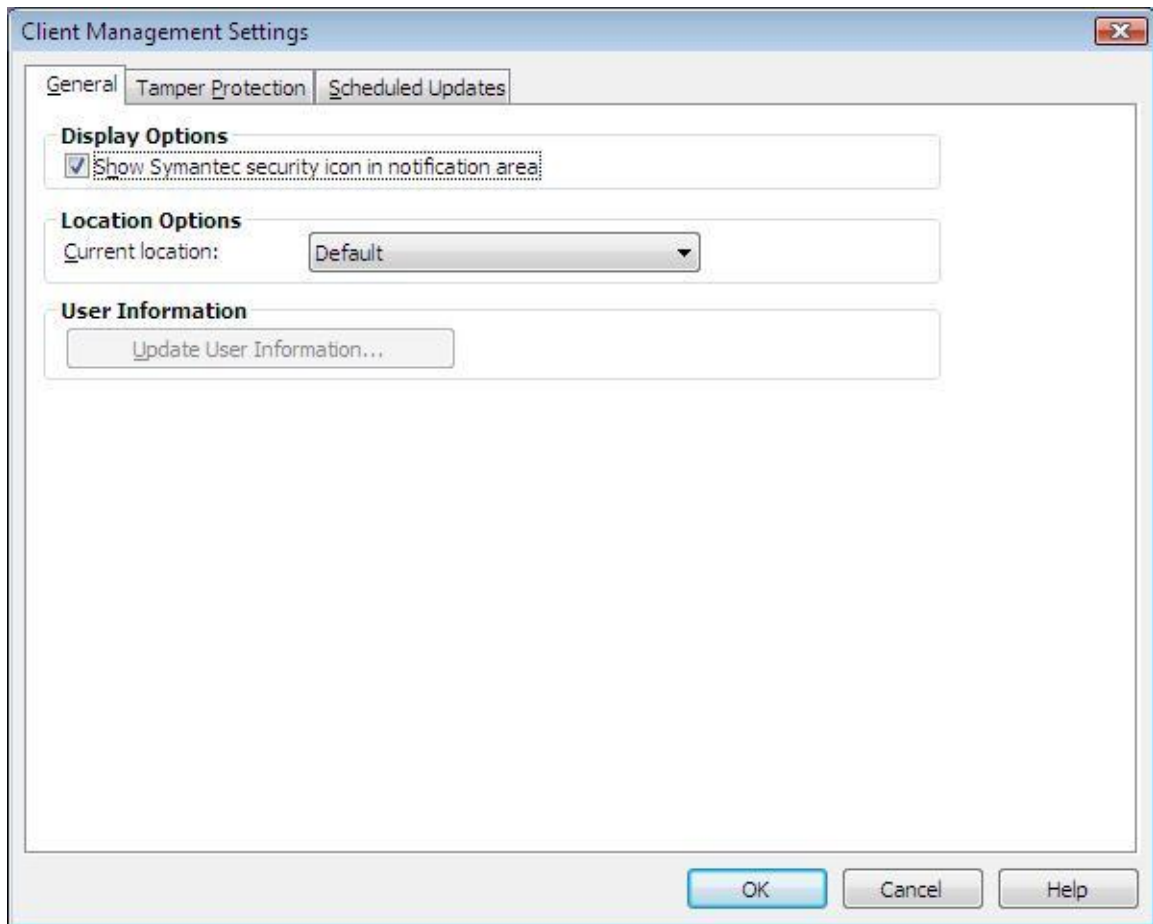


Figure 9: Client Management Settings

Under "view logs" title logs can be viewed

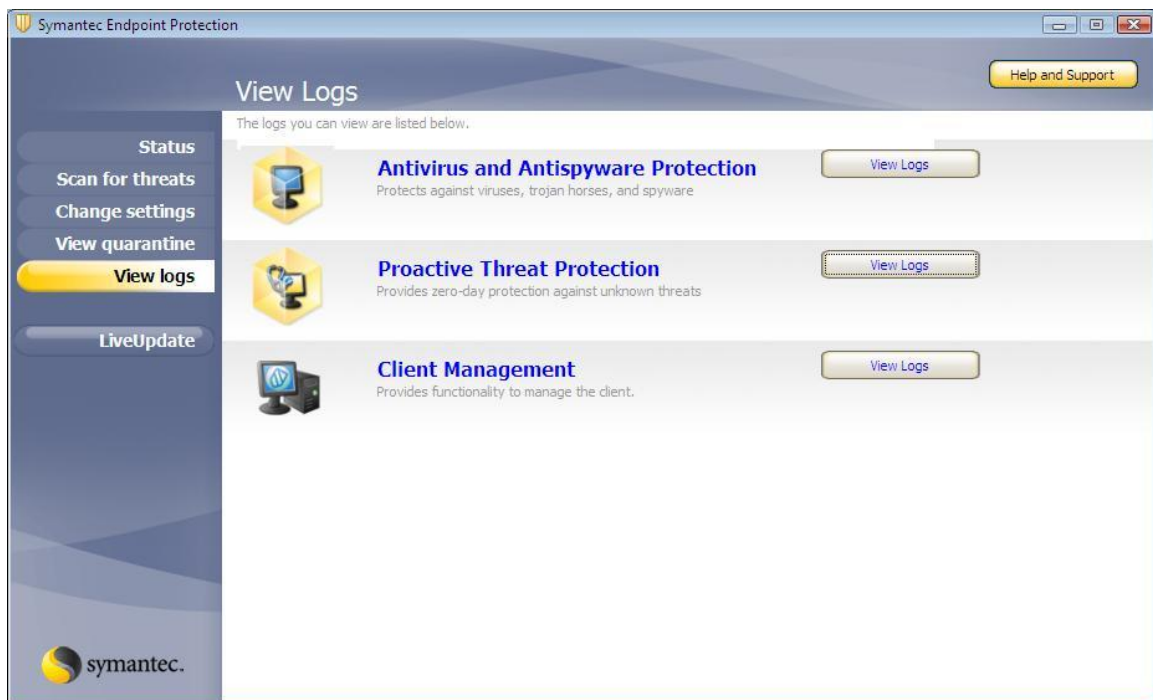


Figure 10: Management interface. (View Logs)

With "Live Update" button all the necessary updates are checked



Figure 11: Live Update