



# MSC Apex<sup>®</sup> 2024.1

## Installation Guide

## Americas

9004 Research Drive  
California  
Irvine 92618  
Telephone: (714) 540-8900  
Email: [americas.contact@hexagon.com](mailto:americas.contact@hexagon.com)

## Europe, Middle East, Africa

Am Moosfeld 13  
81829 Munich, Germany  
Telephone: (49) 89 431 98 70  
Email: [europe@hexagon.com](mailto:europe@hexagon.com)

## Japan

KANDA SQUARE 16F  
2-2-1 Kanda Nishikicho, Chiyoda-ku  
Tokyo 101-0054, Japan  
Telephone: (81)(3) 6275 0870  
Email: [MSCJ.Market@hexagon.com](mailto:MSCJ.Market@hexagon.com)

## Asia-Pacific

100 Beach Road  
#16-05 Shaw Tower  
Singapore 189702  
Telephone: 65-6272-0082  
Email: [APAC.Contact@hexagon.com](mailto:APAC.Contact@hexagon.com)

## Worldwide Web

[www.hexagon.com](http://www.hexagon.com)

## Support

<https://simcompanion.hexagon.com/>

## Disclaimer

This documentation, as well as the software described in it, is furnished under license and may be used only in accordance with the terms of such license.

Hexagon reserves the right to make changes in specifications and other information contained in this document without prior notice.

The concepts, methods, and examples presented in this text are for illustrative and educational purposes only, and are not intended to be exhaustive or to apply to any particular engineering problem or design. Hexagon assumes no liability or responsibility to any person or company for direct or indirect damages resulting from the use of any information contained herein.

User Documentation: Copyright © 2024 Hexagon AB and/or its subsidiaries. All Rights Reserved.

This notice shall be marked on any reproduction of this documentation, in whole or in part. Any reproduction or distribution of this document, in whole or in part, without the prior written consent of Hexagon is prohibited.

This software may contain certain third-party software that is protected by copyright and licensed from Hexagon suppliers. Additional terms and conditions and/or notices may apply for certain third party software. Such additional third party software terms and conditions and/or notices may be set forth in documentation and/or at [third part software](#) (or successor website designated by Hexagon from time to time). Portions of this software are owned by Siemens Product Lifecycle Management, Inc. © Copyright 2024

Hexagon, Hexagon logo, MSC, MSC Software logo, MSC Apex, MSC Adams, MD Adams, and Adams are trademarks or registered trademarks of Hexagon AB and/or its subsidiaries in the United States and/or other countries. FLEXIm and FlexNet Publisher are trademarks or registered trademarks of Flexera Software. Parasolid is a registered trademark of Siemens Product Lifecycle Management, Inc. All other trademarks are the property of their respective owners.

U.S. Patents 8,942,963, 8,970,590, 8,996,342, 9,152,740 and 9,607,422. Other U.S. Patents Pending.

APEX:2024.1.Z:Z:DC-OPS-EN-PDF

# Required Hardware and Software Configurations

- [Hardware and Software Requirements](#)
- [Virtual Machine Requirements](#)
- [Peripheral Devices](#)
- [Other Software Requirements](#)
- [Supported Graphics Cards and OpenGL Acceleration](#)
- [Dual Graphics Cards](#)
- [MSC Apex Certified Hardware](#)
- [Privileges Requirements](#)
- [Installing MSC Apex](#)
- [Licensing](#)

## Hardware and Software Requirements

MSC Apex supports the following Microsoft Windows hardware and software.

### Windows 11

Computer Requirements	
Hardware Platforms	Intel Core 2 Duo, I7 and Intel Xeon, Intel Core 2 Quad
Memory	16 GB Minimum 32 GB (or higher) Recommended
Swap Space/Page File	Swap = 1.5 times the memory size.
Disk Space	25-30GB*
Operating Systems	Windows 11 Professional 64-bit:  21H2
Other	3 Button Mouse  Active network card for licensing.
Graphics Devices	1280x1024 or higher resolution

### Windows 10

Computer Requirements	
Hardware Platforms	Intel Core 2 Duo, I7 and Intel Xeon, Intel Core 2 Quad
Memory	8 GB Minimum 16 GB (or higher) Recommended
Swap Space/Page File	Swap = 1.5 times the memory size.
Disk Space	12-20GB*
Operating Systems	Windows 10 Professional 64-bit:  1903: Certified  1709, 1803: Available
Other	3 Button Mouse  Active network card for licensing.
Graphics Devices	1280x1024 or higher resolution

The application may actually run with fewer resources than shown, but we recommend these minimums for practical use. These guidelines are based on typical use.

**Note:**

\*Benchmark testing suggests that up to a 30% increase in performance of simulation can be realized if the operating system, MSC Apex installation and the Solver Scratch directory is on a Solid State Disk compared to the same installation on a SATA hard disk drive.

MSC Apex may not be installed on shared or mapped network drives.

## Virtual Machine Requirements

Virtual Machine Host Requirements	
Hardware Platform	Intel Xeon E Series Processors (2 CPUs)
Memory	256 GB Minimum
Disk Space	800 GB SSD
Graphics Card	NVidia Grid K1 or K2 or M6
Network	10 Gigabit
Network Connection Speed to VDI device	Minimum 5 Mbps upload/5 Mbps download or higher is recommended.
VM Client	VMware Horizon View 6.0
VMware Hypervisor	vSphere 5.5
Display Protocol	vDGA using PCoIP

Virtual Machine Requirements	
VM Operating Systems	Windows 10 Professional 64-bit
VM Virtual Processors	4
VM Memory	8 GB Minimum 16 GB (or higher) Recommended
VM Swap Space/Page File	Swap = 1.5 times the memory size.
VM Disk Space	12-20GB
VM Disk IOPs	1000
OpenGL	OpenGL 3.3 or higher
Screen Resolution	1280x1024 or higher resolution
Other	3 Button Mouse

MSC Apex also supports VMware Workstation 12 Player to create a virtual machine on a laptop or desktop.

In order to run Apex using Remote Desktop, the remote machine should have an Nvidia Quadro card that is already included in the list of MSC Apex Supported Hardware (see [MSC Apex Certified Hardware](#) table below) and a driver version of 9.18.13.4105 or higher. For other cards; third party remote access tools (such as RealVNC) have to be used.

For the latest information on supported platforms for upcoming releases of Hexagon products, please visit the following web site: <http://www.hexagon.com/Support/Platform-Support/Default.aspx>

## Peripheral Devices

3DCONNEXION's SpacePilot PRO, SpaceMouse PRO and SpaceNavigator products, have been tested with Apex. "3DxWare 10 for Windows (64-bit)" version "10.4.3" is the required driver.

Note: In order for your device to operate properly, you may have to copy

```
..\MSC Apex\2022-xxxxxx\clef\Framework\AppFrame\res\MSC_Apex_3dMouse.xml to C:\Program Files\3Dconnexion\3DxWare\3DxWinCore64\Cfg
```

The 3dConnexion Driver will automatically create an <appName>.xml 3dMouse configuration file for applications that have not already provided an xml file for the application. If you have problems, you should delete any found MSC\_Apex\*.xml files from the UserData...3dConnexion... folders.

## Other Software Requirements

Adobe Flash Player Version 11 or higher is required to view the tutorials that are included with MSC Apex.



## Supported Graphics Cards and OpenGL Acceleration

Apex uses OpenGL acceleration. Any graphics board and driver combination that supports OpenGL version 3.3 or higher and 1280x1024 resolution or greater should work with the application. Hexagon has, however, tested the following specific graphics adapters to verify compatibility with the application on Windows. We cannot guarantee the functionality of other graphics devices.

## Dual Graphics Cards

If running MSC Apex on a system with dual graphics cards, it is recommended that you choose to activate the high performance graphics processor instead of the integrated graphics for MSC Apex. For more information, please review the following SimCompanion article regarding usage and configuration of dual graphics cards:

<https://simcompanion.hexagon.com>

## MSC Apex Certified Hardware

### Windows 10:

Brand-Model	CPU	Graphics Card	Graphics Card Driver
HP Zbook Fury 16 G9	Intel(R) Core(TM) i7-12850HX 2.80 GHz	NVIDIA RTX A2000	31.0.15.2667
HP Zbook Fury 16 G9	Intel(R) Core(TM) i7-12850HX 2.10 GHz	NVIDIA RTX A3000	30.0.15.1298
HP Zbook Fury 16 G9	Intel(R) Core(TM) i7-12850HX 2.80 GHz	AMD Radeon™ Pro W6600M	31.0.12026.3004
HP Zbook Firefly G9	Intel(R) Core(TM) i7-1265U 1.80 GHz	NVIDIA RTX A500	31.0.15.1713
HP Zbook Studio 16 G9	Intel(R) Core(TM) i7-12800H 2.40 GHz	NVIDIA RTX A4500	31.0.15.2667
HP Zbook Firefly 14 G9	Intel(R) Core(TM) i7-1265U 1.80 GHz	NVIDIA RTX T550	31.0.15.1713
HP Zbook 15 G3	Intel(R) Core(TM) i7-6820HQ CPU @ 2.70GHz ~2.71GHz (8 CPUs)	NVIDIA Quadro M1000M	10.18.13.5461
HP Zbook 15u G3	Intel(R) Core(TM) i7-6600U CPU @ 2.60GHz ~2.81GHz (8 CPUs)	AMD FirePro W4190M	15.201.1701.1005
HP Zbook 15 G3	Intel(R) Xeon(R) CPU E5-1545M v5 @ 2.9GHz ~2.8GHz(8 CPUs), 16GB	Intel® Iris™ Pro Graphics P580	20.19.15.4444
HP Zbook 15 G3	Intel(R) Core(TM) i7-6820HQ CPU @ 2.70GHz ~2.70GHz (8 CPUs)	AMD FirePro W5170M	15.201.2601.1003
HP Zbook 17 G3	Intel(R) Core(TM) i7-6820HQ CPU @ 2.70GHz ~2.70GHz (8 CPUs)	NVIDIA Quadro M2000M	10.18.13.5461
HP Zbook 17 G3	Intel(R) Core(TM) i7-6820HQ CPU @ 2.70GHz ~2.70GHz (8 CPUs)	NVIDIA Quadro M5000M	10.18.13.5461

Brand-Model	CPU	Graphics Card	Graphics Card Driver
Dell Precision 7530	Intel(R) Xeon(R) E-2176M CPU @ 2.70GHz (12 CPUs), ~2.7GHz	NVIDIA Quadro P1000	23.21.13.9827
HP Z4 G4 Workstation	Intel(R) Xeon(R) W-2125 CPU @ 4.00GHz (8CPUs), ~4.0GHz	NVIDIA Quadro RTX 6000	24.21.14.1216
*HP Z4 G4 Workstation	Intel(R) Xeon(R) W-2125 CPU @ 4.00GHz (8CPUs), ~4.0GHz	NVIDIA Quadro RTX 5000	24.21.14.1195
*HP Z4 G4 Workstation	Intel(R) Xeon(R) W-2125 CPU @ 4.00GHz (8CPUs), ~4.0GHz	NVIDIA Quadro RTX 4000	24.21.14.1195
*HP Z4 G4 Workstation	Intel(R) Xeon(R) W-2125 CPU @ 4.00GHz (8CPUs), ~4.0GHz	NVIDIA Quadro RTX 8000	25.21.14.1917
HP ProBook 650 G2	Intel(R) Core(TM) i7-6600U CPU @ 2.60GHz (4 CPUs), ~2.8GHz	AMD Radeon (TM) R7 M350	25.20.15031.5004
*HP Z4 G4 Workstation	Intel(R) Xeon(R) W-2125 CPU @ 4.00GHz (8CPUs), ~4.0GHz	NVIDIA Quadro RTX 5000	25.21.14.1917
*HP Z4 G4 Workstation	Intel(R) Xeon(R) W-2125 CPU @ 4.00GHz (8CPUs), ~4.0GHz	NVIDIA Quadro RTX 6000	25.21.14.1917
*HP Z4 G4 Workstation	Intel(R) Xeon(R) W-2125 CPU @ 4.00GHz (8CPUs), ~4.0GHz	NVIDIA Quadro RTX 4000	25.21.14.1917
*HP Z4 G4 Workstation	Intel(R) Xeon(R) W-2125 CPU @ 4.00GHz (8CPUs), ~4.0GHz	NVIDIA Quadro P2200	26.21.14.3064
*HP Z4 G4 Workstation	Intel(R) Xeon(R) W-2125 CPU @ 4.00GHz (8CPUs), ~4.0GHz	AMD Radeon Pro WX 3200 Series	26.20.11002.1001
HP ZBook 14u G6	Intel(R) Core (TM) i7-8665U CPU @ 1.90GHz 2.11 GHz	AMD Radeon Pro WX3200 Graphics	25.20.15026.2
HP Z4 G4 Workstation	Intel(R) Xeon(R) W-2125 CPU @ 4.00GHz (8CPUs), ~4.0GHz	AMD Radeon Pro WX3200	26.20.11024.1

Brand-Model	CPU	Graphics Card	Graphics Card Driver
HP Z4 G4 Workstation	Intel(R) Xeon(R) W-2125 CPU @ 4.00GHz (8CPUs), ~4.0GHz	AMD Radeon Pro WX2100	26.20.11024.1
HP Z4 G4 Workstation	Intel(R) Xeon(R) W-2125 CPU @ 4.00GHz (8CPUs), ~4.0GHz	AMD Radeon Pro WX3100	26.20.11024.1
HP Z4 G4 Workstation	Intel(R) Xeon(R) W-2125 CPU @ 4.00GHz (8CPUs), ~4.0GHz	AMD Radeon Pro WX4100	26.20.11024.1
HP Z4 G4 Workstation	Intel(R) Xeon(R) W-2125 CPU @ 4.00GHz (8CPUs), ~4.0GHz	AMD Radeon Pro WX5100	26.20.11024.1
HP Z4 G4 Workstation	Intel(R) Xeon(R) W-2125 CPU @ 4.00GHz (8CPUs), ~4.0GHz	AMD Radeon Pro WX7100	26.20.11024.1
HP Z4 G4 Workstation	Intel(R) Xeon(R) W-2125 CPU @ 4.00GHz (8CPUs), ~4.0GHz	AMD Radeon Pro WX8200	26.20.11024.1
HP Z4 G4 Workstation	Intel(R) Xeon(R) W-2125 CPU @ 4.00GHz (8CPUs), ~4.0GHz	AMD Radeon Pro WX9100	26.20.11024.1
HP Zbook15u G4	Intel(R) Core(TM) i7-7600U CPU @ 2.80GHz (4 CPUs), ~2.9GHz	AMD FirePro W4190M	21.19.142.32768
Dell Precision 3260 Compact	Intel(R) Core(TM) i7-12700	NVIDIA Quadro RTX 3000	31.0.15.1640
Dell 3571	Intel(R) Core(TM) i7-12800H	NVIDIA T600	10.0.19041.1741
Dell 3650	Intel(R) Xeon W-1350 CPU @ 3.30GHz 3.31GHz	NVIDIA Quadro M6000	30.0.14.7168
Dell 5570	Intel(R) Core(TM) i7-12800H	NVIDIA RTX A1000	31.0.15.1700
Dell Precision 7520	Intel(R) Core(TM) i7-7920HQ CPU @ 3.10GHz (8 CPUs), ~3.1GHz	AMD Radeon Pro WX 4130	21.19.384.3

Brand-Model	CPU	Graphics Card	Graphics Card Driver
Dell Precision 7520	Intel(R) Xeon(R) CPU E3-1535M v6 @ 3.10GHz (8 CPUs), ~3.1GHz	AMD Radeon Pro WX 4150	21.19.384.3
Dell Precision 7520	Intel(R) Core(TM) i7-7920HQ CPU @ 3.10GHz (8 CPUs), ~3.1GHz	NVIDIA Quadro M1200	21.21.13.7586
Dell Precision 7520	Intel(R) Core(TM) i7-7920HQ CPU @ 3.10GHz (8 CPUs), ~3.1GHz	NVIDIA Quadro M2200	21.21.13.7586
Dell Precision 7720	Intel(R) Core(TM) i7-7920HQ CPU @ 3.10GHz (8 CPUs), ~3.1GHz	AMD Radeon Pro WX 4130	21.19.384.3
Dell Precision 7720	Intel(R) Core(TM) i7-7920HQ CPU @ 3.10GHz (8 CPUs), ~3.1GHz	AMD Radeon Pro WX 7100	21.19.384.3
Dell Precision 7720	Intel(R) Core(TM) i7-7920HQ CPU @ 3.10GHz (8 CPUs), ~3.1GHz	NVIDIA Quadro P3000	21.21.13.7586
Dell Precision 7720	Intel(R) Core(TM) i7-7920HQ CPU @ 3.10GHz (8 CPUs), ~3.1GHz	NVIDIA Quadro P4000	21.21.13.7586
Dell Precision 7720	Intel(R) Xeon(R) CPU E3-1535M v6 @ 3.10GHz (8 CPUs), ~3.1GHz	NVIDIA Quadro P5000	21.21.13.7586
Dell Precision T1500	Intel(R) Core(TM) i7 CPU 860 @ 2.80GHz, ~2.80GHz	AMD FirePro V4800(FireGL V)	15.201.2401.0
HP Zbook 15 G4	Intel(R) Core(TM) i7-7820HQ CPU @ 2.90GHz ~2.90GHz (8 CPUs)	NVIDIA Quadro M1200	377.43
HP Zbook 15 G4	Intel(R) Core(TM) i7-7820HQ CPU @ 2.90GHz ~2.90GHz (8 CPUs)	AMD Radeon Pro WX4150	16.40.3801.1002
HP Zbook 17 G4	Intel(R) Core(TM) i7-7820HQ CPU @ 2.90GHz ~2.90GHz (8 CPUs)	NVIDIA Quadro M2200	377.43
HP Zbook 17 G4	Intel(R) Core(TM) i7-7820HQ CPU @ 2.90GHz ~2.90GHz (8 CPUs)	NVIDIA Quadro P5000	377.43

Brand-Model	CPU	Graphics Card	Graphics Card Driver
HP Zbook Studio G4	Intel(R) Core(TM) i7-7820HQ CPU @ 2.90GHz -2.90GHz (8 CPUs)	NVIDIA Quadro M1200	377.43
Dell Precision 7920 Tower	Intel(R) Xeon(R) Gold 6130 CPU @ 2.10GHz (64 CPUs), ~2.1GHz	NVIDIA Quadro P600	377.11
Dell Precision 7920 Tower	Intel(R) Xeon(R) Gold 6130 CPU @ 2.10GHz (64 CPUs), ~2.1GHz	NVIDIA Quadro P1000	377.11
Dell Precision 7920 Tower	Intel(R) Xeon(R) Gold 6130 CPU @ 2.10GHz (64 CPUs), ~2.1GHz	NVIDIA Quadro P2000	377.11
Dell Precision 7920 Tower	Intel(R) Xeon(R) Gold 6130 CPU @ 2.10GHz (64 CPUs), ~2.1GHz	NVIDIA Quadro P4000	377.11
Dell Precision 7920 Tower	Intel(R) Xeon(R) Gold 6130 CPU @ 2.10GHz (64 CPUs), ~2.1GHz	NVIDIA Quadro P5000	377.11
Dell Precision 7920 Tower	Intel(R) Xeon(R) Gold 6130 CPU @ 2.10GHz (64 CPUs), ~2.1GHz	NVIDIA Quadro P6000	377.11
Dell Precision 7920 Tower	Intel(R) Xeon(R) Gold 6130 CPU @ 2.10GHz (64 CPUs), ~2.1GHz	AMD Radeon WX4100	17.10.1730.1004
Dell Precision 7920 Tower	Intel(R) Xeon(R) Gold 6130 CPU @ 2.10GHz (64 CPUs), ~2.1GHz	AMD Radeon WX5100	17.10.1730.1004
Dell Precision 7920 Tower	Intel(R) Xeon(R) Gold 6130 CPU @ 2.10GHz (64 CPUs), ~2.1GHz	AMD Radeon WX7100	17.10.1730.1004
HP Z8 G4 Workstation	Intel(R) Xeon(R) Gold 6128 CPU @ 3.40GHz (24 CPUs), ~3.4GHz	AMD Radeon WX2100	22.19.640.2
HP Z8 G4 Workstation	Intel(R) Xeon(R) Gold 6128 CPU @ 3.40GHz (24 CPUs), ~3.4GHz	AMD Radeon WX3100	22.19.640.2

Brand-Model	CPU	Graphics Card	Graphics Card Driver
HP Z8 G4 Workstation	Intel(R) Xeon(R) Gold 6128 CPU @ 3.40GHz (24 CPUs), ~3.4GHz	AMD Radeon WX4100	22.19.640.2
HP Z8 G4 Workstation	Intel(R) Xeon(R) Gold 6128 CPU @ 3.40GHz (24 CPUs), ~3.4GHz	AMD Radeon WX9100	22.19.640.2
HP Z4 G4 Workstation	Intel(R) Xeon(R) W-2125 CPU @ 4.00GHz (8 CPUs), ~4.0GHz	AMD Radeon WX2100	22.19.640.2
HP Z4 G4 Workstation	Intel(R) Xeon(R) W-2125 CPU @ 4.00GHz (8 CPUs), ~4.0GHz	AMD Radeon WX3100	22.19.640.2
HP Z4 G4 Workstation	Intel(R) Xeon(R) W-2125 CPU @ 4.00GHz (8 CPUs), ~4.0GHz	AMD Radeon WX4100	22.19.640.2
HP Z8 G4 Workstation	Intel(R) Xeon(R) Gold 6128 CPU @ 3.40GHz (24 CPUs), ~3.4GHz	NVIDIA Quadro P4000	385.69
*HP Z4 G4 Workstation	Intel(R) Xeon(R) W-2125 CPU @ 4.00GHz (8 CPUs), ~4.0GHz	NVIDIA Quadro P620	23.21.13.9077
*HP Z4 G4 Workstation	Intel(R) Xeon(R) W-2125 CPU @ 4.00GHz (8 CPUs), ~4.0GHz	AMD Radeon WX9100	22.19.693.256
HP ZBook 14u G5	Intel(R) Core(TM) i7-8650U CPU @1.90GHz 2.11GHz	AMD Radeon Pro WX 3100	23.20.787.768
Dell Precision 7530	Intel(R) Core(TM) i7-8850H CPU @2.60GHz 2.59GHz	NVIDIA Quadro P2000	23.21.13.8908
Dell Precision 3530	Intel(R) Xeon(R) E-2176M CPU @2.70GHz 2.71GHz	NVIDIA Quadro P600	23.21.13.8908
Dell Precision 7730	Intel(R) Core(TM) i9-8950HK CPU @2.90GHz 2.90GHz	NVIDIA Quadro P3200	23.21.13.8908
HP ZBook 17 G5	Intel(R) Core(TM) i7-8850H CPU @ 2.60GHz (12 CPUs), ~2.6GHz	NVIDIA Quadro P5200	23.21.13.9148



Brand-Model	CPU	Graphics Card	Graphics Card Driver
HP ZBook 17 G5	Intel(R) Core(TM) i7-8850H CPU @ 2.60GHz (12 CPUs), ~2.6GHz	NVIDIA Quadro P2000	23.21.13.9148
HP ZBook Studio x360 G5	Intel(R) Core(TM) i7-8850H CPU @ 2.60GHz (12 CPUs), ~2.6GHz	NVIDIA Quadro P1000	23.21.13.9148
HP ZBook 15 G5	Intel(R) Core(TM) i7-8850H CPU @ 2.60GHz (12 CPUs), ~2.6GHz	AMD Radeon (TM) Pro WX Series	24.20.12024.10
Dell Precision 7730	Intel(R) Core(TM) i7-8850H CPU @ 2.60GHz (12 CPUs), ~2.6GHz	AMD Radeon (TM) Pro WX 7100 Graphics	24.20.12024.10
HP Z840	Intel (R) Xeon CPU E5-2620 v4 @2.10 GHz	AMD Radeon (TM) Pro WX 8200	18.Q3
HP Z840	Intel (R) Xeon CPU E5-2620 v4 @2.10 GHz	AMD Radeon (TM) Pro WX 8200	18.Q4
Dell Precision 7530	Intel(R) Xeon(R) E-2176M CPU @ 2.70GHz (12 CPUs), ~2.7GHz	NVIDIA Quadro P1000	23.21.13.9827
HP Z4 G4 Workstation	Intel(R) Xeon(R) W-2125 CPU @ 4.00GHz (8CPUs), ~4.0GHz	NVIDIA Quadro RTX 6000	24.21.14.1216
*HP Z4 G4 Workstation	Intel(R) Xeon(R) W-2125 CPU @ 4.00GHz (8CPUs), ~4.0GHz	NVIDIA Quadro RTX 5000	24.21.14.1195
*HP Z4 G4 Workstation	Intel(R) Xeon(R) W-2125 CPU @ 4.00GHz (8CPUs), ~4.0GHz	NVIDIA Quadro RTX 4000	24.21.14.1195
*HP Z4 G4 Workstation	Intel(R) Xeon(R) W-2125 CPU @ 4.00GHz (8CPUs), ~4.0GHz	NVIDIA Quadro RTX 8000	25.21.14.1917
HP ProBook 650 G2	Intel(R) Core(TM) i7-6600U CPU @ 2.60GHz (4 CPUs), ~2.8GHz	AMD Radeon (TM) R7 M350	25.20.15031.5004
*HP Z4 G4 Workstation	Intel(R) Xeon(R) W-2125 CPU @ 4.00GHz (8CPUs), ~4.0GHz	NVIDIA Quadro RTX 5000	25.21.14.1917

Brand-Model	CPU	Graphics Card	Graphics Card Driver
*HP Z4 G4 Workstation	Intel(R) Xeon(R) W-2125 CPU @ 4.00GHz (8CPUs), ~4.0GHz	NVIDIA Quadro RTX 6000	25.21.14.1917
*HP Z4 G4 Workstation	Intel(R) Xeon(R) W-2125 CPU @ 4.00GHz (8CPUs), ~4.0GHz	NVIDIA Quadro RTX 4000	25.21.14.1917
*HP Z4 G4 Workstation	Intel(R) Xeon(R) W-2125 CPU @ 4.00GHz (8CPUs), ~4.0GHz	NVIDIA Quadro P2200	26.21.14.3064
*HP Z4 G4 Workstation	Intel(R) Xeon(R) W-2125 CPU @ 4.00GHz (8CPUs), ~4.0GHz	AMD Radeon Pro WX 3200 Series	26.20.11002.1001
HP ZBook 14u G6	Intel(R) Core (TM) i7-8665U CPU @ 1.90GHz 2.11 GHz	AMD Radeon Pro WX3200 Graphics	25.20.15026.2
HP Z4 G4 Workstation	Intel(R) Xeon(R) W-2125 CPU @ 4.00GHz (8CPUs), ~4.0GHz	AMD Radeon Pro WX3200	26.20.11024.1
HP Z4 G4 Workstation	Intel(R) Xeon(R) W-2125 CPU @ 4.00GHz (8CPUs), ~4.0GHz	AMD Radeon Pro WX2100	26.20.11024.1
HP Z4 G4 Workstation	Intel(R) Xeon(R) W-2125 CPU @ 4.00GHz (8CPUs), ~4.0GHz	AMD Radeon Pro WX3100	26.20.11024.1
HP Z4 G4 Workstation	Intel(R) Xeon(R) W-2125 CPU @ 4.00GHz (8CPUs), ~4.0GHz	AMD Radeon Pro WX4100	26.20.11024.1
HP Z4 G4 Workstation	Intel(R) Xeon(R) W-2125 CPU @ 4.00GHz (8CPUs), ~4.0GHz	AMD Radeon Pro WX5100	26.20.11024.1
HP Z4 G4 Workstation	Intel(R) Xeon(R) W-2125 CPU @ 4.00GHz (8CPUs), ~4.0GHz	AMD Radeon Pro WX7100	26.20.11024.1
HP Z4 G4 Workstation	Intel(R) Xeon(R) W-2125 CPU @ 4.00GHz (8CPUs), ~4.0GHz	AMD Radeon Pro WX8200	26.20.11024.1
HP Z4 G4 Workstation	Intel(R) Xeon(R) W-2125 CPU @ 4.00GHz (8CPUs), ~4.0GHz	AMD Radeon Pro WX9100	26.20.11024.1

Brand-Model	CPU	Graphics Card	Graphics Card Driver
HP Z4 G4 Workstation	Intel(R) Xeon(R) W-2125 CPU @ 4.00GHz (8CPUs), ~4.0GHz	AMD Radeon Pro W5700	19. Q4
HP Z4 G4 Workstation	Intel(R) Xeon(R) W-2125 CPU @ 4.00GHz (8CPUs), ~4.0GHz	AMD Radon Pro W5500	20. Q1
HP Z4 G4 Workstation	Intel(R) Xeon(R) W-2125 CPU @ 4.00GHz (8CPUs), ~4.0GHz	AMD Radon Pro WX3100	20. Q1
HP Z4 G4 Workstation	Intel(R) Xeon(R) W-2125 CPU @ 4.00GHz (8CPUs), ~4.0GHz	AMD Radon Pro WX3200	20. Q1
HP Z4 G4 Workstation	Intel(R) Xeon(R) W-2125 CPU @ 4.00GHz (8CPUs), ~4.0GHz	AMD Radon Pro WX4100	20. Q1
HP Z4 G4 Workstation	Intel(R) Xeon(R) W-2125 CPU @ 4.00GHz (8CPUs), ~4.0GHz	AMD Radon Pro WX5100	20. Q1
HP Z4 G4 Workstation	Intel(R) Xeon(R) W-2125 CPU @ 4.00GHz (8CPUs), ~4.0GHz	AMD Radon Pro WX7100	20. Q1
HP Z4 G4 Workstation	Intel(R) Xeon(R) W-2125 CPU @ 4.00GHz (8CPUs), ~4.0GHz	AMD Radon Pro WX8200	20. Q1
HP Z4 G4 Workstation	Intel(R) Xeon(R) W-2125 CPU @ 4.00GHz (8CPUs), ~4.0GHz	AMD Radon Pro WX9100	20. Q1
HP Z4 G4 Workstation	Intel(R) Xeon(R) W-2125 CPU @ 4.00GHz (8CPUs), ~4.0GHz	AMD Radon Pro WX5700	20. Q1
HP ZBook 15 G6	Intel(R) Core(TM) i7-9850H CPU @2.60GHz(12 CPUs)-2.6GHz	NVIDIA Quadro T1000	25.21.14.2591
HP ZBook 15 G6	Intel(R) Core(TM) i7-9850H CPU @2.60GHz(12 CPUs)-2.6GHz	NVIDIA Quadro RTX3000	25.21.14.2591

Brand-Model	CPU	Graphics Card	Graphics Card Driver
HP ZBook 17 G6	Intel(R) Core(TM) i7-9850H CPU @2.60GHz(12 CPUs)-2.6GHz	NVIDIA Quadro RTX5000	25.21.14.2591
Dell Precision 7540	Intel(R) Core(TM) i7-9750H CPU @ 2.60GHz (12 CPUs), ~2.6GHz	AMD Radeon(TM) Pro WX3200 Graphics	26.20.13028.13
Dell Precision 7540	Intel(R) Core(TM) i7-9750H CPU @ 2.60GHz (12 CPUs), ~2.6GHz	NVIDIA Quadro T2000	26.21.14.4219
Dell Precision 7740	Intel(R)Xeon(R)E-2276M CPU @2.80GHz (12CPUs),~2.8GHz	NVIDIA Quadro RTX 5000	26.21.14.4219
HP ZBook Fury 17 G7	Intel(R) Core(TM) i7-10850H CPU @2.70GHz	NVIDIA Quadro RTX5000	27.20.11027.4001
HP ZBook Fury 15 G7	Intel(R) Core(TM) i7-10850H CPU @2.70GHz	AMD Radeon(TM) Pro W5500M	27.21.14.5167
HP Zbook Studio G7	Intel(R) Core(TM) i7-10850H CPU @2.70GHz	NVIDIA Quadro RTX4000	27.21.14.5167
HP Zbook Studio G7	Intel(R) Core(TM) i7-10850H CPU @2.70GHz	NVIDIA Quadro RTX3000	27.21.14.5167
HP Zbook Studio G7	Intel(R) Core(TM) i7-10850H CPU @2.70GHz	NVIDIA Quadro T2000	27.21.14.5167
HP Zbook Studio G7	Intel(R) Core(TM) i7-10850H CPU @3.00GHz	NVIDIA Quadro T1000	27.21.14.5167
HP Zbook Firefly 14 G8	Intel(R) Core(TM) i7-1185G7 CPU @2.70GHz	NVIDIA T500	27.21.14.5256
HP ZBook Fury 15 G8	Intel(R) Core(TM) i7-10850H CPU @2.50GHz	AMD Radeon(TM) Pro W6600M	21.10.16.03
HP Zbook Studio G8	Intel(R) Core(TM) i7-10850H CPU @2.50GHz	NVIDIA RTX A2000	27.21.14.6294
Dell Precision 7750	Intel(R) Core(TM) i9-10880H CPU @2.30GHz	NVIDIA Quadro RTX5000	27.21.14.5148

Brand-Model	CPU	Graphics Card	Graphics Card Driver
Dell Precision 7560	Intel(R) Core(TM) i7-11600H CPU @2.90GHz	NVIDIA RTX A2000	27.21.14.6259
Dell Precision 7550	Intel(R) Core(TM) i9-10850H CPU @2.70GHz	NVIDIA Quadro RTX3000	27.21.14.5148
Dell Precision 7550	Intel(R) Core(TM) i7-10880H CPU @2.30GHz	NVIDIA Quadro T1000	27.21.14.5148
Dell Precision 3561	Intel(R) Core(TM) i9-11950H CPU @2.60GHz	NVIDIA T600	27.21.14.6209
Dell Precision 3551	Intel(R) Core(TM) i7-10875H CPU @2.30GHz	NVIDIA Quadro P620	27.21.14.5148
HP ZBook Power G9	Intel® Core™ i7-12700H CPU@ 4.7 GHz	NVIDIA T600	30.0.15.1298
HP ZBook Power G9	Intel® Core™ i7-12700H CPU@ 4.7 GHz	NVIDIA RTX A1000	30.0.15.1298
HP Z8 G5 Workstation	Intel(R) Xeon(R) Gold 6426Y-2.50 GHz	NVIDIA RTX A4000	528.24
HP Z8 G5 Workstation	Intel(R) Xeon(R) Gold 6426Y-2.50 GHz	NVIDIA RTX A4500	528.24
HP Z8 G5 Workstation	Intel(R) Xeon(R) Gold 6426Y-2.50 GHz	NVIDIA RTX A2000	528.24
HP Z8 G5 Workstation	Intel(R) Xeon(R) Gold 6426Y-2.50 GHz	NVIDIA T400	528.24
HP Z8 G5 Workstation	Intel(R) Xeon(R) Gold 6426Y-2.50 GHz	NVIDIA RTX 6000 Ada	528.24
HP Z8 G5 Workstation	Intel(R) Xeon(R) Gold 6426Y-2.50 GHz	NVIDIA GeForce RTX 3060 Ti	528.24
HP Z8 G5 Workstation	Intel(R) Xeon(R) Gold 6426Y-2.50 GHz	AMD W6300 LP	22. Q3
HP Zbook Power 15.6 inch G10	Intel i9-13900H	NVIDIA RTX 2000 Ada Generation Laptop GPU	528.02

Brand-Model	CPU	Graphics Card	Graphics Card Driver
HP Zbook Fury 16 inch G10	Intel i9-13950HX	NVIDIA RTX 3500 Ada Generation Laptop GPU	528.02
HP Zbook Firefly 14 inch G10	Intel i7-1365U	NVIDIA RTX A500 Laptop GPU	528.02
HP Zbook Power 15.6 inch G10	Intel i9-13900H	NVIDIA RTX 3000 Ada Generation Laptop GPU	528.02
HP Zbook Studio 16 inch G10	Intel i7-13800H	NVIDIA RTX 4000 Ada Generation Laptop GPU	528.02
HP Zbook Power 15.6 inch G10	Intel i7-13800H	NVIDIA RTX A500 Laptop GPU	528.02
HP Zbook Fury 16 inch G10	Intel i9-13950HX	NVIDIA RTX 5000 Ada Generation Laptop GPU	528.02
HP Zbook Power 15.6 inch G10	Intel i9-13900H	NVIDIA RTX A1000 6GB Laptop GPU	528.02
HP Zbook Power 15.6 inch G10	AMD Ryzen PRO 7840HS w/Radeon 780M Graphics	NVIDIA RTX 2000 Ada Generation Laptop GPU	528.02
DELL Precision 7865 Tower	AMD Ryzen Threadripper PRO 5995WX	NVIDIA RTX A2000	31.0.15.2849
DELL Precision 7865 Tower	AMD Ryzen Threadripper PRO 5995WX	AMD Radeon Pro W7900	31.0.21018.1004
DELL Precision 7865 Tower	AMD Ryzen Threadripper PRO 5995WX	AMD Radeon Pro W7500	31.0.21018.1004
HP Z8 G5 Workstation	Intel(R) Xeon(R) Gold 6426Y-2.50 GHz (2 processors)	NVIDIA RTX 5000 Ada Generation	31.0.15.3742
HP Z4 G5 Workstation	Intel(R) Xeon ® W-2455X 3.19 GHz	AMD Radeon Pro W7600	31.0.21018.6011
HP Z4 G5 Workstation	Intel(R) Xeon ® W-2455X 3.19 GHz	NVIDIA RTX 4500 Ada Generation	31.0.15.3770

Brand-Model	CPU	Graphics Card	Graphics Card Driver
HP Z8 G5 Workstation	Intel(R) Xeon(R) Gold 6426Y-2.50 GHz (2 processors)	NVIDIA RTX 6000 Ada Generation	31.0.15.3598
HP Z8 G5 Workstation	Intel(R) Xeon(R) Gold 6426Y-2.50 GHz (2 processors)	NVIDIA T400	31.0.15.3598
HP Z8 G5 Workstation	Intel(R) Xeon(R) Gold 6426Y-2.50 GHz (2 processors)	NVIDIA RTX A2000	31.0.15.3598
HP Z8 G5 Workstation	Intel(R) Xeon(R) Gold 6426Y-2.50 GHz (2 processors)	NVIDIA Geforce RTX 3060 Ti	31.0.15.3598
HP Zbook Power G10	AMD Ryzen 7 PRO 7840HS w/Radeon 780M Graphics 3.80 GHz	NVIDIA RTX 2000 Ada Generation	31.0.15.3696
HP Zbook Power G10	Intel i9-13900H	NVIDIA RTX 2000 Ada Generation	31.0.15.3696
HP ZBook Studio G10	Intel i7-13800H	NVIDIA RTX 4000 Ada Generation	31.0.15.3696
HP ZBook Fury G10	Intel i9-13950HX	NVIDIA RTX 5000 Ada Generation	31.0.15.3696
HP ZBook Fury G10	Intel i9-13950HX	NVIDIA RTX 3500 Ada Generation	31.0.15.2908
Dell Precision 3581	i7-13800H	NVIDIA RTX A500	31.0.15.3799
Dell Precision 7780	i7-13850HX	NVIDIA RTX 2000 Ada Generation	31.0.15.3799
Dell Precision 7680	i9-13950HX	NVIDIA RTX 5000 Ada Generation	31.0.15.3799
Dell Precision 7780	i9-13900HX	NVIDIA RTX 3500 Ada Generation	31.0.15.3799
HP Z6 G5 A Workstation	AMD Ryzen Threadripper Pro 7955WX 16 cores	NVIDIA RTX A4000	31.0.15.3799
Dell Precision 5860 Tower	Intel Xeon® w7-2495X 2.5GHz	NVIDIA T400	31.0.15.3799
Dell Precision 7960 Tower	Intel Xeon® w7-3455 2.5GHz	NVIDIA RTX A2000 12GB	31.0.15.3799

Brand-Model	CPU	Graphics Card	Graphics Card Driver
Dell Precision 3260	i9-13900	AMD Radeon Pro W6400	31.0.23013.3005
Dell Precision 3581	i7-13800H	NVIDIA RTX A500	31.0.15.3799
Dell Precision 7780	i7-13850HX	NVIDIA RTX 2000 Ada Generation	31.0.15.3799
Dell Precision 7680	i9-13950HX	NVIDIA RTX 5000 Ada Generation	31.0.15.3799
Dell Precision 7780	i9-13900HX	NVIDIA RTX 3500 Ada Generation	31.0.15.3799
HP Z6 G5 A Workstation	AMD Ryzen Threadripper Pro 7955WX 16 cores	NVIDIA RTX A4000	31.0.15.3799
Dell Precision 5860 Tower	Intel Xeon® w7-2495X 2.5GHz	NVIDIA T400	31.0.15.3799
Dell Precision 7960 Tower	Intel Xeon® w7-3455 2.5GHz	NVIDIA RTX A2000 12GB	31.0.15.3799

**Notes:** If graphical issues still remain with driver update to the latest version, please make sure to update BIOS

For cards with no driver information, please use the latest version certified by the vendor.

If the application is unable to launch and prompts an error regarding your graphics card, using NVidia/ AMD Control Center and adding MSC\_Apex.exe to its 3D settings might resolve the issue

\* HP Z640 is the HP Z440 with expandability of second processor. The Z440, Z640 and Z840 are all the same Intel Chipset.

\*\*While the application does run on this configuration, there are currently known issues which are being investigated.

**Also Supported on HP(Per HP certification process)**

- ZBook FireFly 16 G9 NVIDIA T550
- ZBook FireFly 14 & 15 G7 NVIDIA Quadro P520
- ZBook Power G7 NVIDIA Quadro P620, T1000, T2000
- ZBook Studio G9 NVIDIA RTX A1000, NVIDIA RTX A2000, NVIDIA, RTX A3000, NVIDIA RTX A5500



- ZBook Studio/Fury 15 & 17 G7 NVIDIA Quadro T1000, T2000, RTX 3000, RTX 4000, RTX 5000
- ZBook 15 & 17 G7 AMD Radeon Pro W5500M
- ZBook FireFly 14 & 15 G8 NVIDIA T500
- ZBook Fury 16 G9 NVIDIA RTX A1000, NVIDIA RTX A4500, NVIDIA RTX A5500
- ZBook Studio/Fury 15 & 17 G8 NVIDIA T600, T1200, RTX A2000, RTX A3000, RTX A4000, RTX A5000
- ZBook Studio/Fury 16 G9 NVIDIA RTX A4500, NVIDIA RTX A2000, RTX A3000
- ZBook Power G8 NVIDIA T600, T1200, RTX A2000
- Z4/Z6 Desktops per certification of HP Z840.
- RTX A4500 with 472.47 supported on Z4 G4, Z6 G4, Z8 G4.
- Double Memory cards: NVIDIA T400 4G, T1000 8G and RTX A2000 12GB
- AMD Radeon Pro W6600
- HP ZBook Power G9 with RTX A2000
- HP Z4 G5 Workstation NVIDIA RTX A4000, NVIDIA RTX A4500, NVIDIA RTX A2000, NVIDIA T400, NVIDIA RTX 6000 Ada, NVIDIA GeForce RTX 3060 Ti, AMD W6300 LP
- HP Z6 G5 Workstation NVIDIA RTX A4000, NVIDIA RTX A4500, NVIDIA RTX A2000, NVIDIA T400, NVIDIA RTX 6000 Ada, NVIDIA GeForce RTX 3060 Ti, AMD W6300 LP
- HP Z8 Fury G5 Workstation NVIDIA RTX A4000, NVIDIA RTX A4500, NVIDIA RTX A2000, NVIDIA T400, NVIDIA RTX 6000 Ada, NVIDIA GeForce RTX 3060 Ti, AMD W6300 LP
- ZBook Firefly 16 G10 NVIDIA RTX A500
- ZBook Power G10 A NVIDIA RTX A1000
- ZBook Studio G10 NVIDIA RTX A1000, RTX 2000 Ada, RTX 3000 Ada
- ZBook Fury G10 NVIDIA RTX A1000, RTX 2000 Ada, RTX 4000 Ada

**Also Supported with AMD (Per AMD certification process)**

- AMD Radeon PRO W6400, W6800 and W6600M
- AMD W6300, W6600, and W6800.
- AMD Radeon PRO W7500, W7600, W7800 and W7900

If graphical issues still remain with driver update to the latest version, please make sure to update the BIOS  
 For cards with no driver information, please use the latest version certified by the vendor.

If the application is unable to launch and prompts an Open GL error, please use NVidia/ AMD Control Center and add MSC\_Apex.exe to its 3D settings to solve the issue.

**Important:**

We can not guarantee the functionality of other graphics devices.

## Privileges Requirements

You need administrator privileges to install the application. This allows for C++ runtime libraries and .NET components to be installed.

## Installing MSC Apex

If you are downloading from the Solutions Download Center, download MSC\_Apex\_Comb\_XXXX.X and follow these steps:

1. Copy the downloaded 7z file to a temporary subdirectory with enough disk space.
2. Unzip MSC\_Apex\_Comb\_XXXX.X file.
3. Double-click the **setup** (.exe) file and follow the prompts.
4. If you plan to use videos and tutorials, you will need to download the documentation installer and point to it during **Step 3**.

## Allowing Installation With Security Software

In order to install MSC Apex, the application and its lockserver must be allowed to execute by any security software on the system. MSC Apex is whitelisted with Symantec, but users with other security software must add exceptions that allow the MSC Apex lockserver to run. If these exceptions are not made, the security software will prevent MSC Apex from installing.

If a security error occurs during Apex installation, users should manually add Apex installation folder to their security software's exception list and then start the lock server using lsconfig.bat. lsconfig.bat is located at:

```
"<INSTALLATION_FOLDER>\leaf\Services\EOM\WIN8664\bin\lsconfig.bat".
```

## Silent Installation Option

The MSC Apex installer provides a silent installation option where the responses to prompts during one installation may be recorded and repeated to create subsequent identical installations.

Note: MSC\_Apex\_Comb\_XXXX.X\_win64.exe will be invoked in commands below instead of MSC\_Apex\_XXXX.X\_win64.exe; if a Combined Installer is used.

### Recording an installation

You can record a silent install response file by running an installer with the -r option, which will store the responses in a .iss file that may be used for subsequent installations. For example, to install MSC Apex and record the installation responses to D:\my\_response.iss, run the following command:

```
setup.exe -r -fl"D:\my_response.iss"
```

### Playing back a recorded installation

To perform additional installations using the responses that were stored in the my\_response.iss file run the following command:

```
setup.exe -s -fl"D:\my_response.iss"
```

## Notation for Localized Language Silent Installation

To have the silent installation install in a language other than the default of English, you may add the following flags to your command:

- German: -L1031
- Japanese: -L1041
- French: -L1036
- Chinese (Simplified): -L2052

For example, to use the above language flags and install MSC Apex and its associated documentation in German you should run the following command:

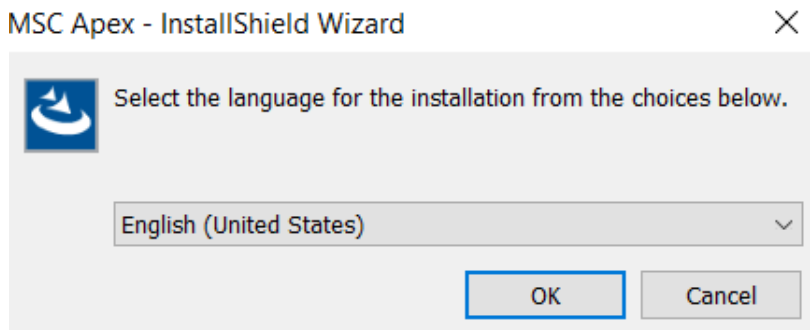
```
setup.exe -s -L1031 -f1"D:\mygerman1.iss"
```

## How to Install MSC Apex

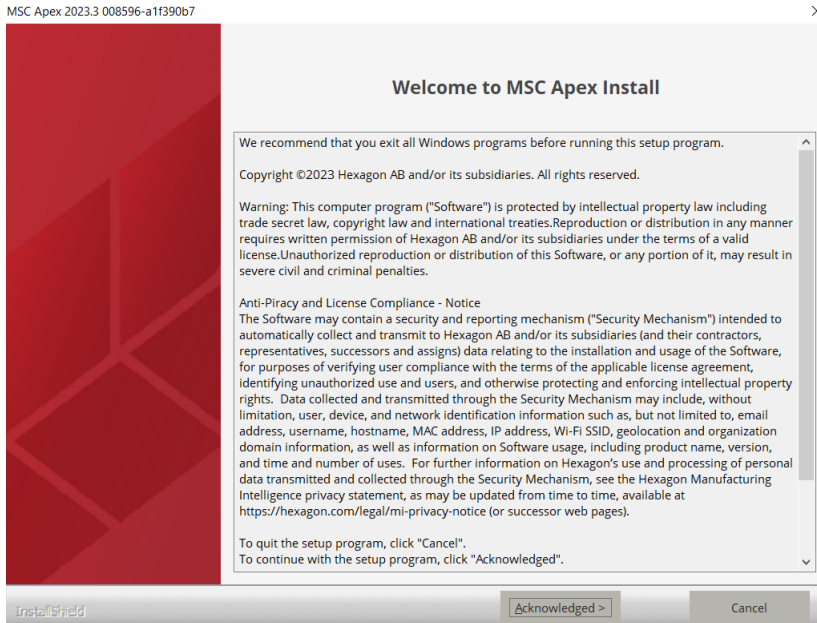
Through the Combined Installer, the users can install both MSC Apex and MSC Apex Generative Design, along with their respective documentation. During the software installation process, a window will pop up, allowing users to select the installer they wish to run.

To Install the MSC Apex on your machine, follow the instructions below:

Double-click the **setup** (.exe) file. The language selection window will appear as shown below:

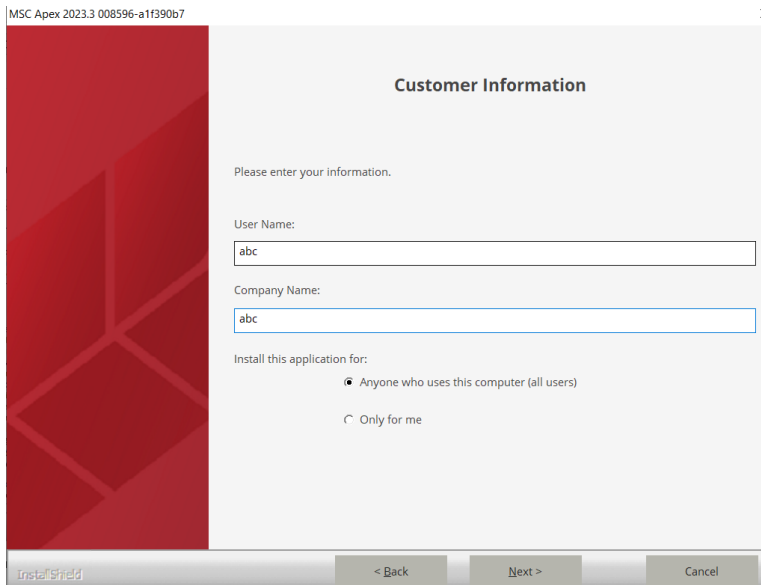


If you click 'OK', the welcome agreement window will appear as shown below:



Select **Acknowledged >** button to continue, or **Cancel** button to exit without installing.

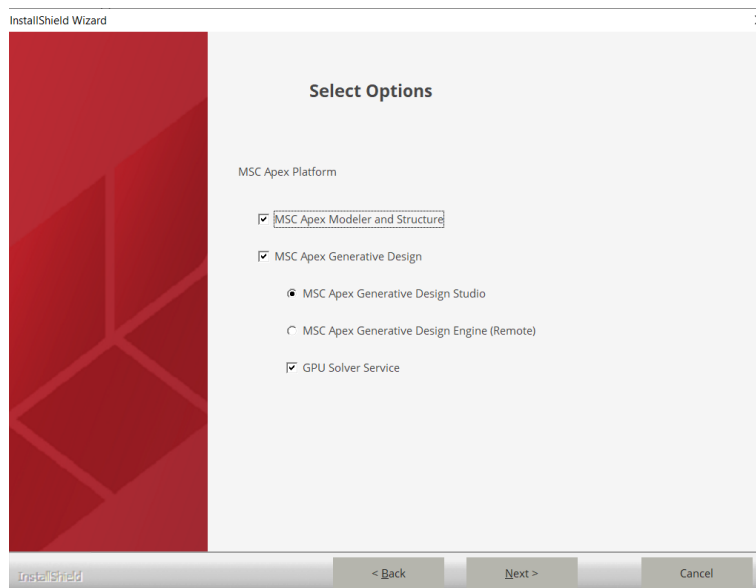
If you select Acknowledged, the **Customer Information** window appears as shown below:



In the Customer Information window, enter your user name and company name, and then select one of the following:

- **Anyone who uses this computer (all users)** - Anyone logged on to this machine can run MSC\_Apex\_XXXX.X.
- **Only for me** - A user must be logged on using the user name and password that was used at the time of installation.

Select **Next** will move to **Select Options** page as below:

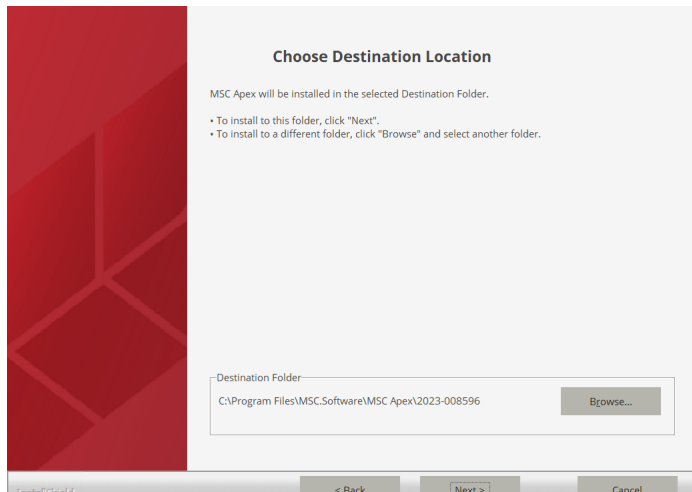


Here you need to select the Installer you wish to run. For example: MSC Apex Modeler or MSC Apex Generative Design, or both.

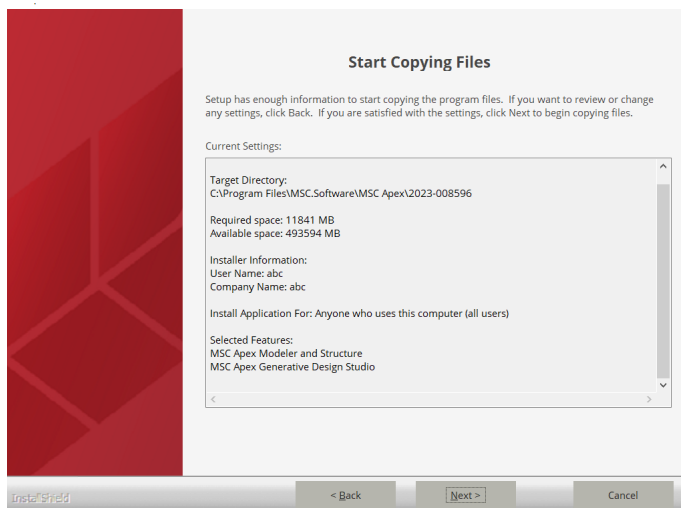
### GPU Solver Option

The GPU option is available for all installation types. The GPU Solver option is enabled per default for local or remote solving, and requires a Nvidia Quadro Graphics Card and the CUDA Driver installed. For more information about GPU Solver Service, refer to the MSC Apex Generative Design documentation.

Select **Next** will move to **Choose Destination Location** page as shown below. Here you can select the location where you want to install the MSC Apex.



Select **Next** will move to **Review setting** page as below:

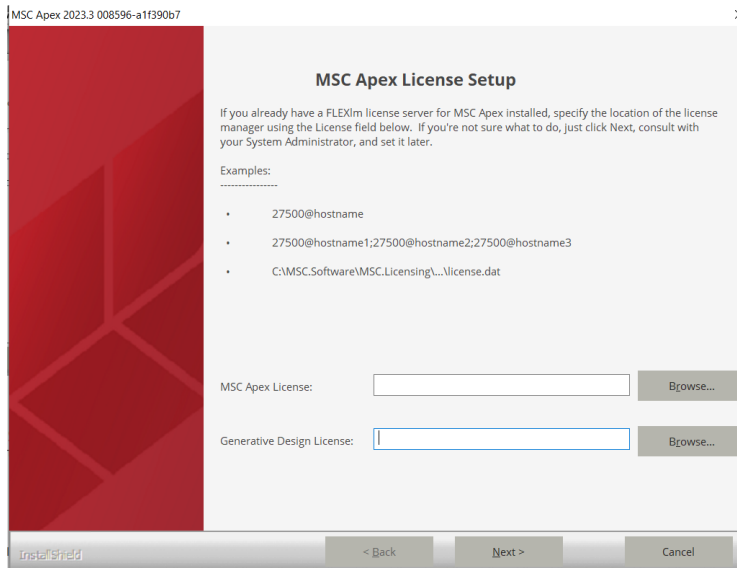


Confirm the installation settings and then select **Next** to begin the installation.



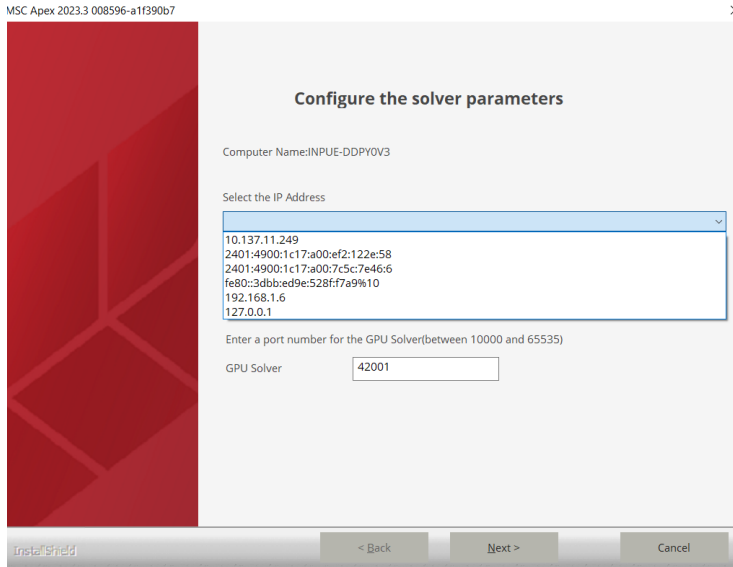
## Licensing

The user can browse for the licensing files to complete the installation. For more information regarding licensing, please see the MSC Licensing 11.13 User's Guide.



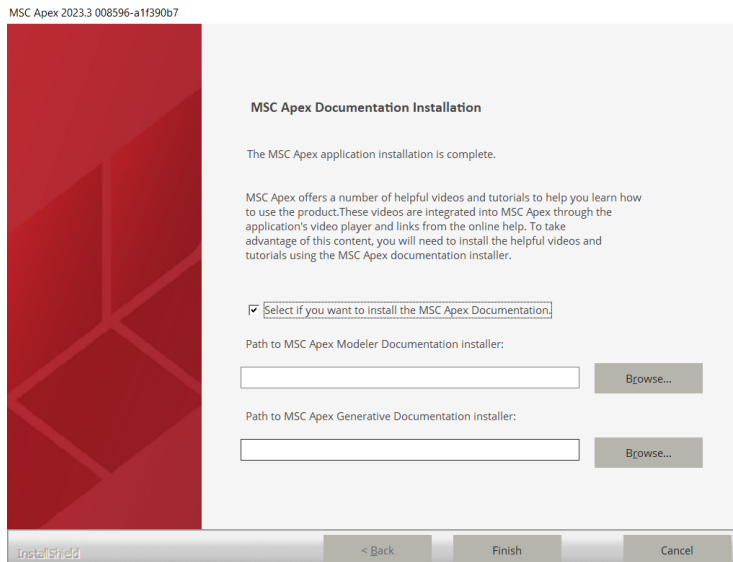
### For Generative Design:

To configure the solver parameters, **Select the IP Address** from the drop-down menu.



### Link the Documentation:

To link the documentation to the installers, browse for the associated documentation files and click **Finish**. You may complete the setup without documentation by unchecking the checkbox.



## Licensing

Once the Setup program has installed all of the files, it will prompt for the licensing information.

Note that global setting of license servers (by explicitly defining the `MSC_LICENSE_FILE` environment variable for your computer) supersedes the license setting done by MSC Apex during installation.

For more information regarding licensing, please see the MSC Licensing 11.13 User's Guide.

